

Slave unit IBSS 50

Applications

Drive unit Type IBSS 50 is intended for Belt conveyor Type IBGS 50 -11.

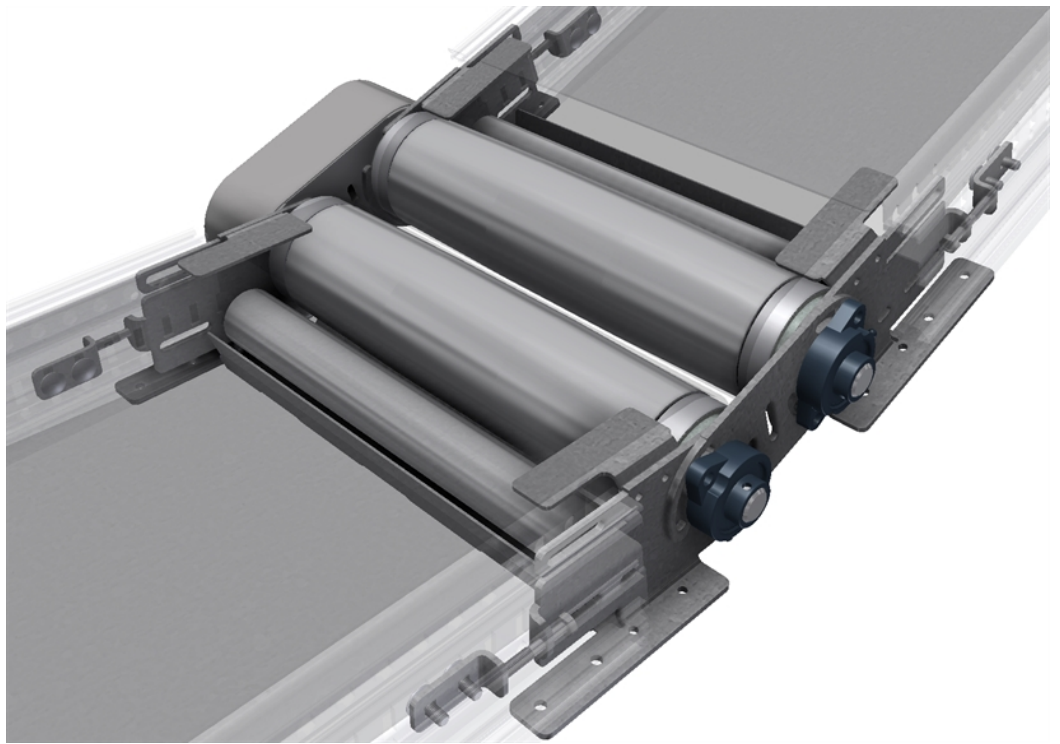
Description

Turning unit incl., slave unit, with adjustable angle.

Order example

IBSS 50 – 320

Type – EL

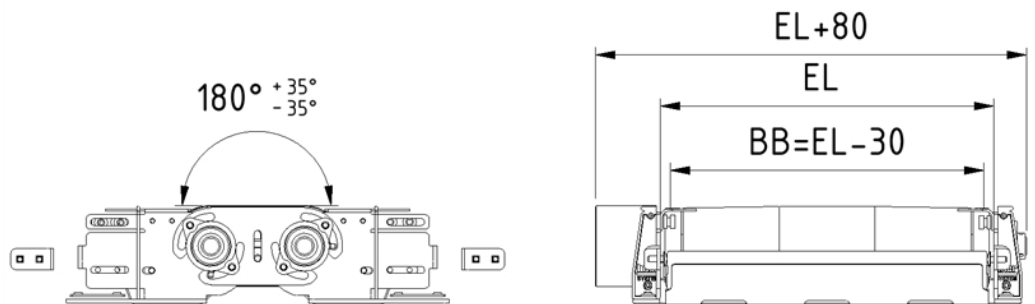


Specification

	Material/Type	Finish
Bracket	Steel	Zinc-plated

Technical data

Type	Internal width EL mm	UtvRatio	Drive cylinder Ø mm	Max. load kg	Angle V°
IBSS 50 –	320-620	1:1	102	100-200	+45



**INTER
SYSTEM**

Tel: +46 431 44 91 00

info@intersystem.se

www.intersystem.se